

# FUFINI

---

A R T C E M E N T

[www.fufini.id](http://www.fufini.id)

FUNCTION

INNOVATION

ARTISTIC

# ABOUT FUFINI



In 2013, we introduced FUFINI Microcement to China from Valencia, Spain. We source premium European imported materials, specializing in microcement, artistic cement, natural lime-based coatings, and eco-friendly DIY coatings.

Certifications and Achievement

Multiple microcement patent technologies

French A+ environmental certification

Popular in Southeast Asia and mainland China

FUFINI - Enhancing designs, adding colour to buildings





# INTRODUCTION TO FUFINI MICROCEMENT

---

Microcement: Also known as decorative cement, artistic cement, or nano cement, microcement is a new-generation surface decorative material that has gained popularity in Europe. It is a dual-component inorganic coating for walls and floors. Component A primarily consists of fine imported cement, minerals, and quartz, while Component B is a water-based eco-friendly resin. Features include high strength, thin layer, seamless application, and integration for walls, ceilings, and floors. It can also be applied to furniture and cabinets to achieve a cohesive colour effect, maximizing spatial design possibilities.

Application Surfaces: Suitable for almost any surface: cement mortar, terrazzo, marble, tiles, gypsum board, or plaster. It can be applied to both indoor and outdoor, vertical or horizontal surfaces.







Imagine a thin layer only **2–3 mm** thick of **colored cement with texture** that feels like **liquid stone**. That's **Microcement**.

It can be applied directly over your **existing tiles, walls, or floors** no need for messy demolition or major renovations. The result? **A seamless, elegant finish** that looks like polished concrete but is lighter, stronger, and easier to maintain.

Microcement is **waterproof, durable, and versatile**, perfect for any design from bathrooms and kitchens to living spaces and even furniture.

With FUFINI, you get the **beauty of natural stone**, the **efficiency of modern coating**, and the **freedom to design without limits**.

### WHY PEOPLE LOVE FUFINI MICROCEMENT:

- Smooth, joint-free finish that feels premium
- Thin but incredibly strong
- Waterproof and stain resistant
- Quick to apply, no messy renovations
- Easy to clean and maintain
- Eco-friendly and safe for the whole family



# PRODUCT CLASSIFICATION

Product	Indoor	Outdoor	Wet Area (Bathroom/ Kitchen)	Dry Area	Wall	Floor	Key Strength
One-Component	✓	✗	Medium	✓	✓	✗	Fast, cost-effective, easy application
Two-Component	✓	✓	Strong	✓	✓	✓	Extra-strong, crack-resistant, best for high-traffic
Ready-to-Use	✓	✗	Strong	✓	✓	✓	Practical, DIY-friendly, no mixing needed
Inorganic Plaster	✓	✓	Medium	✓	✓	✗	Natural stone look, artistic finish
Micro Rock	✓	✓	Very Strong	✓	✓	✓	Ultra-hard, granite-like, built for outdoor/public areas





## STAIN RESISTANCE TEST

Cleaning Products: Clean water/medical alcohol/neutral cleaners/toothpaste

Stains	Dilution Ratio	After 4 hours	After 12 hours	After 72 hours
Coffee		○	○	○
Soy sauce		○	○	○
White vinegar		○	×	×
Barbecue sauce		○	○	○
Tomato juice		○	○	○
Red wine		○	○	○
Vegetable oil		○	○	○
Tea stains		○	○	○
Natural orange juice		○	○	○
Citric acid	80%	○	○	○
Cola		○	○	○
Water-borne marker pen		○	○	○
Disinfectant	1:10-1:30	○	○	×
Calcium hydroxide	25%	○	○	○
Sodium hydroxide	20%	○	○	○
Sodium chloride	30%	○	○	○



## For walls

Surface drying time: 4-8 hours

Compressive Strength:

After 1 day:  $\sim 4,5\text{N/mm}^2$

After 7 days:  $\sim 8,0\text{N/mm}^2$

After 28 days:  $> 13,0\text{N/mm}^2$

Bending strength:

After 1 day:  $\sim 1,5\text{N/mm}^2$

After 7 days:  $\sim 3,0\text{N/mm}^2$

After 28 days:  $\sim 5,0\text{N/mm}^2$

Fire Rating: A1

Flexibility: 50mm diameter without cracks

Bonding Strength:  $\geq 1.0\text{Mpa}$

Surface Hardness :  $> 2\text{H}$

Shore Hardness after 28 days:  $> 55$

Alkali Efflorescence Resistance: No abnormalities in 72h

Staining Resistance:  $\leq 15\%$

Artificial Weathering Resistance:

400h without blistering or peeling

Waterproof and Moisture Resistance:

Suitable for general dry area wall use

Storage Stability at Low Temperature: No abnormalities

## For Floor (Furniture/Bathroom)

Surface drying time: 4-8 hours

Compressive Strength:

After 1 day:  $\sim 13,0\text{N/mm}^2$

After 7 days:  $\sim 20,0\text{N/mm}^2$

After 28 days:  $> 30,0\text{N/mm}^2$

Bending Strength:

After 1 day:  $\sim 3,0\text{N/mm}^2$

After 7 days:  $\sim 5,0\text{N/mm}^2$

After 28 days:  $\sim 8,5\text{N/mm}^2$

Fire Rating: A1

Flexibility: 50mm diameter without cracks

Bonding Strength:  $\geq 1.0\text{Mpa}$

Surface Hardness :  $> 4\text{H}$

Shore Hardness after 28 days:  $> 70$

Alkali Efflorescence Resistance: No abnormalities in 72h

Staining Resistance:  $\leq 15\%$

Artificial Weathering Resistance:

400h without blistering or peeling

Waterproof and Moisture Resistance:

Suitable for bathrooms and wet areas

Storage Stability at Low Temperature: No abnormalities





### Ceramic Microcement

Ceramic microcement is a product of advanced material technology and innovative aesthetic craftsmanship, resolving the complexities of traditional microcement processes. It features higher surface hardness and wear resistance than traditional micro-cement, significantly reducing construction and maintenance costs.

Colour: White, grey, customizable

Drying Time: 8-24 hours

Alkali Efflorescence Resistance: No abnormalities in 72h

Surface Hardness: 6H

PH:8.0~9.0

Artificial Weathering Resistance: 400h without blistering or peeling

Water Resistance: Suitable for outdoor and bathroom areas

Environmentally Friendly: Zero formaldehyde, low VOC content, inorganic materials

Shelf Life: 18 months





### One-Component Microcement

FUFINI one-component microcement (cement and water mix) offers better application efficiency and cost-effectiveness. Suitable for dry wall areas, it is easy to polish and can even be applied without sanding.

Its excellent application performance ensures a premium tactile feel and easily achieves mottled effects. These qualities make the One-component series a cost-effective microcement for both indoor and outdoor decorations.

Aesthetically, it resembles lime plaster, but with a more natural surface finish. The One-component microcement also reduces transportation and storage costs by eliminating the need for resin emulsions, saving material and labour costs for large-scale hotel and guesthouse projects.

Flexural Strength

$\geq 8 \text{ N/nm}^2$  (28 days)

Densities

Powder :  $1.005 \pm 50 \text{ Kg/m}^3$

Hardening :  $1.285 \pm 50 \text{ Kg/m}^3$

Dissociation

$\geq 10 \text{ Mpa}$  (28 days)

Adhesion

$\geq 1,7 \text{ N/nm}^2$  (28 days)

Coating Rate:

$1 \text{ kg/m}^2$  (2 layers)

Packaging:

20 kg black plastic bucket









### Ready-To-Use Microcement

Ready to use microcement is pre-mixed and provides a high-end, continuous decorative finish. It significantly improves construction efficiency, speeds up the microcement application, and avoids mixing errors and dust generation on site. Ready to use microcement is an excellent choice for application in occupied interiors.

It stands out for its low thickness and strong adhesion, allowing it to be applied to almost any substrate. It is suitable for both vertical and horizontal surfaces, indoors and outdoors. It offers more uniform colour and retains a premium artistic texture.

Flexural Strength

$\geq 8 \text{ N/nm}^2$  (28 days)

Densities:

Pastes :  $1.505 \pm 50 \text{ Kg/m}^3$

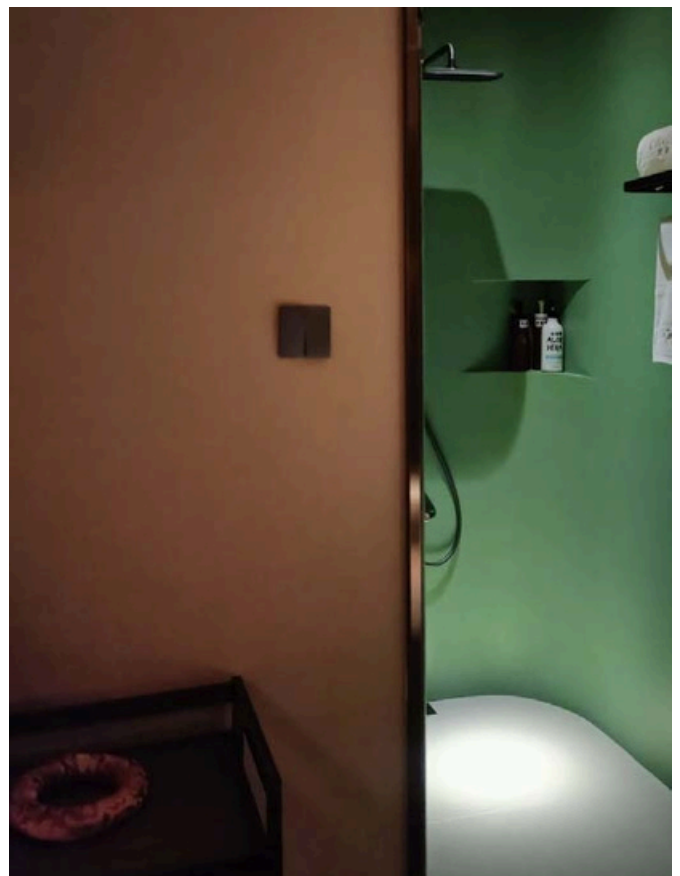
Hardening :  $1.285 \pm 50 \text{ Kg/m}^3$

Dissociation

$\geq 10 \text{ Mpa}$  (28 days)

Adhesion

$\geq 1,5 \text{ N/nm}^2$  (28 days)





### FUFINI MICROROCK - As Solid as Rock, Beyond Rock

Featuring natural granite speckles, FUFINI MicroRock showcases a distinctive granular texture. The unique construction technique imparts an authentic, textured feel of natural stone, offering a seamless and unified decorative surface for floors.

Utilizes gemstone-grade minerals and imported high-performance resin from Belgium, offering higher hardness compared to the quartz materials used in standard micro cement floors. With a Mohs hardness of 9, it is second only to diamond, which has a hardness of 10.

Boasts superior compressive strength and impact resistance compared to microcement floors. It withstands furniture dragging and falling objects with higher abrasion resistance, almost matching the durability of premium ceramic tiles.

With greater density and adhesive strength, it can cover any stable surface, meeting integrated design needs. Its dense, non-porous structure ensures high resistance to water and oil stains, providing worry-free usage and longevity comparable to buildings. Containing over 90% natural mineral ingredients and 5% natural resin, it is free from formaldehyde and has near-zero VOC emissions, ensuring an environmentally friendly composition.

Colour Options:  
White, Gray, Coloured  
(using inorganic mineral pigments)

Drying Time:  
8-24 hours

Compressive Strength:  
≥50 MPa

Shore Hardness:  
>80

Efflorescence Resistance:  
No anomalies after 72 hours

Artificial Climate Aging Resistance:  
No bubbling or peeling after 400 hours,  
excellent water and moisture resistance with no  
anomalies after 8 hours immersion

Environmental Compliance:  
Formaldehyde-free, near-zero VOC content,  
composed of natural eco-friendly materials









### HIGH STRENGTH SELF-LEVELING MICROCEMENT

High-Strength Self-Leveling Microcement is a two-component inorganic composite material designed for substrate leveling and crack resistance in microcement applications. It is ideal for thin tile adhesion, leveling for plastic flooring, wood flooring, rubber flooring, and carpet installation. Additionally, it is suitable for industrial assembly plants, public spaces, warehouses, and other flooring base treatments. The recommended application thickness per layer is 3-8mm.

This self-leveling microcement flows automatically, ensuring a smooth and even surface, effectively eliminating the unevenness commonly found in traditional flooring materials. It boasts high hardness and excellent wear resistance, making it resistant to scratches and abrasions for long-lasting durability. With seamless integration, it offers a sleek and modern finish, avoiding gaps typically found between tiles or floorboards. It also provides excellent waterproof and moisture-resistant properties, making it suitable for humid environments. Available in a variety of customizable colours, self-leveling microcement meets diverse interior design needs. Its smooth, stain-resistant surface ensures easy cleaning and low maintenance.

Colour:  
Grey

Powder-to-Water Ratio:  
5L water: 25kg powder

Consumption Rate:  
1.68 kg/m<sup>2</sup>/mm

Working Time:  
Approximately 20 minutes

Self-leveling Time:  
Approximately 10 to 15 minutes

Time Before Surface Application:  
1 to 2 days

Compressive Strength:  
> 35 MPa (28 days)

Flexural Strength:  
= 27 MPa (28 days)

Volume Change Rate:  
≤ ±0.08% (28 days)

Application Temperature:  
+5°C to +40°C







### LIQUID STONE - A Revolutionary Decorative Material

Liquid stone is an innovative decorative material that blends the essence of technology and art.

Unlike traditional stone, which is heavy and limited in application, liquid stone takes on a fluid form while beautifully replicating the textures and patterns of natural stone.

Compared to conventional stone, liquid stone offers numerous advantages. It is lightweight and easy to apply, significantly reducing renovation time. Additionally, it boasts outstanding waterproof, moisture-resistant, and wear-resistant properties, making it highly durable, crack-resistant, and fade-resistant, which helps lower long-term maintenance costs. Furthermore, liquid stone is an eco-friendly material—non-toxic, odorless, and safe for both humans and the environment, allowing you to enjoy beauty while supporting sustainability.

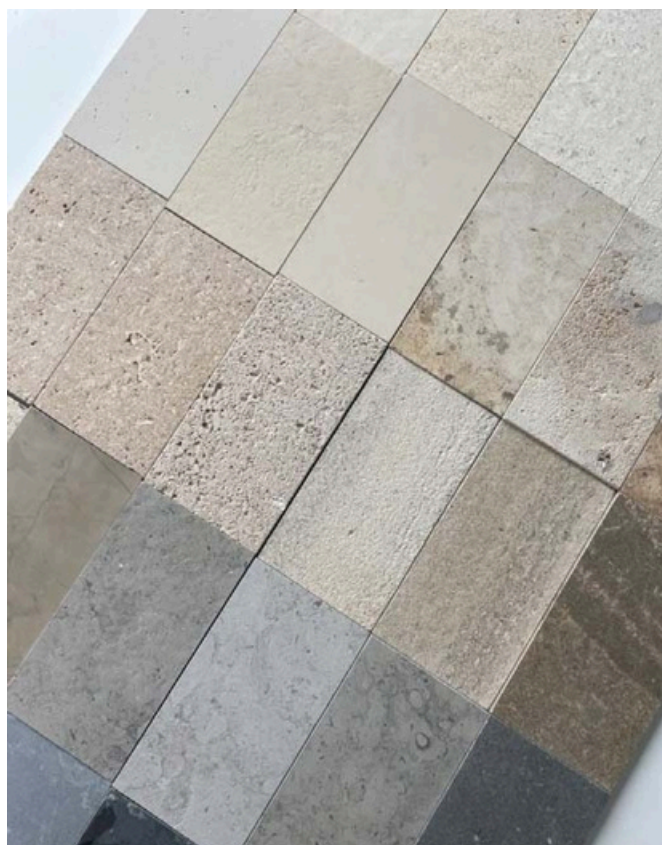
For wall applications, simple seam treatment helps prevent cracking. Apply two coats of pre-mixed Fufini Liquid Stone, allowing 2-4 hours of drying time between each layer. Once it reaches approximately 70% dryness, gently trowel and polish to achieve a natural stone-like sheen. To create the Fufini Liquid Stone Pro version, you can DIY a porous stone effect, use a dust-free polishing machine for sanding and buffing, and finish with a transparent, dust-proof, and stain-resistant protective coating for enhanced durability and aesthetics.

Flexural Strength:  
Wall:  $\geq 5 \text{ N/mm}^2$  (28 days)  
Floor:  $\geq 8 \text{ N/mm}^2$  (28 days)

Density:  
Paste:  $1.285 \pm 0.1 \text{ kg/m}^3$   
Hardened:  $1.505 \pm 0.1 \text{ kg/m}^3$

Strength:  
Wall:  $\geq 20 \text{ MPa}$  (28 days)  
Floor:  $\geq 40 \text{ MPa}$  (28 days)

Adhesion Strength:  
 $\geq 1.5 \text{ N/mm}^2$  (28 days)









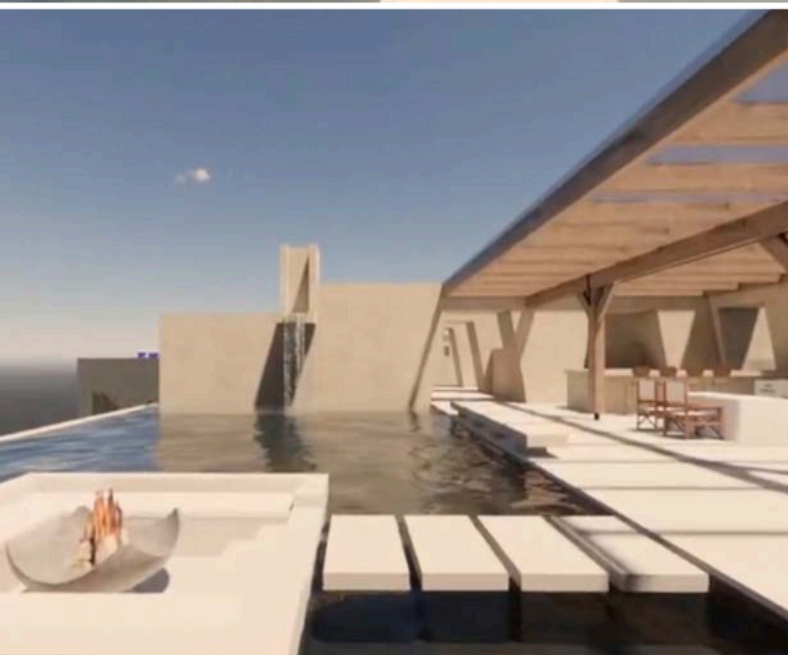
FLEXIBLE RESIN WASHED STONE

Flexible washed stone, also known as liquid carpet or resin washed stone, is a premixed flooring material made from high-hardness environmentally friendly resin through secondary processing. The resin cast and coated wear-resistant floor surface is slip-resistant, abrasion-resistant, durable, and pollution-resistant. It provides exceptional comfort for walking or standing.

This material is made by mixing natural river or sea pebbles or gravel with cement or a special adhesive in a specific ratio, spreading it on a base layer, and then using a heavy tool to flatten and clean the surface to reveal the original appearance of the stones. Due to the variety of colours and shapes of its raw materials, it offers a unique texture, lustre, and aesthetic appeal. It is widely used in indoor wall and floor decorations, as well as outdoor ground and landscape designs.

Flexible Washed Stone is a versatile and eco-friendly decorative material that combines high permeability, breathability, and wear resistance with vibrant colours and aesthetic appeal. Its durable and sustainable properties make it an ideal choice for both interior and exterior applications. This innovative material is widely used in wall and floor decoration, integrated surface solutions, and home décor coordination. It is also perfect for background wall designs, landscape gardening, cultural and tourism landscaping, artistic cement furniture, and prefabricated building integration, offering endless creative possibilities.

Compressive Strength: $\geq 60$ MPa	Sulfuric Acid Resistance: 20% sulfuric acid for 24 hours
Tensile Strength: $\geq 5$ MPa	Hydrochloric Acid Resistance: 5% hydrochloric acid for 24 hours
Flexural Strength: $\geq 30$ MPa	Salt Resistance: 3% sodium chloride for 30 days
Adhesion Strength: $\leq$ Grade 1	Alkali Resistance: 20% sodium hydroxide for 48 hours
Thermal Expansion Index: $\leq 1$ %	Gasoline Resistance: 120# gasoline for 30 days
Impact Resistance: $\geq 50$ KgNaN	Engine Oil Resistance: 30 days
Shore Hardness: $\geq 80$	
Abrasion Resistance: $\leq 0.04$ g	
Water Resistance: 30 days	







# FEATURES

## Crack Resistance

We ensure that our microcement does not crack by using fiber mesh processing to isolate localized cracks in the base layer. The flexibility of microcement can withstand slight deformations.

## Water Resistance

Our floor sealant improves hardness and strength, making the product waterproof and moisture-resistant, ideal for bathrooms and shower areas.

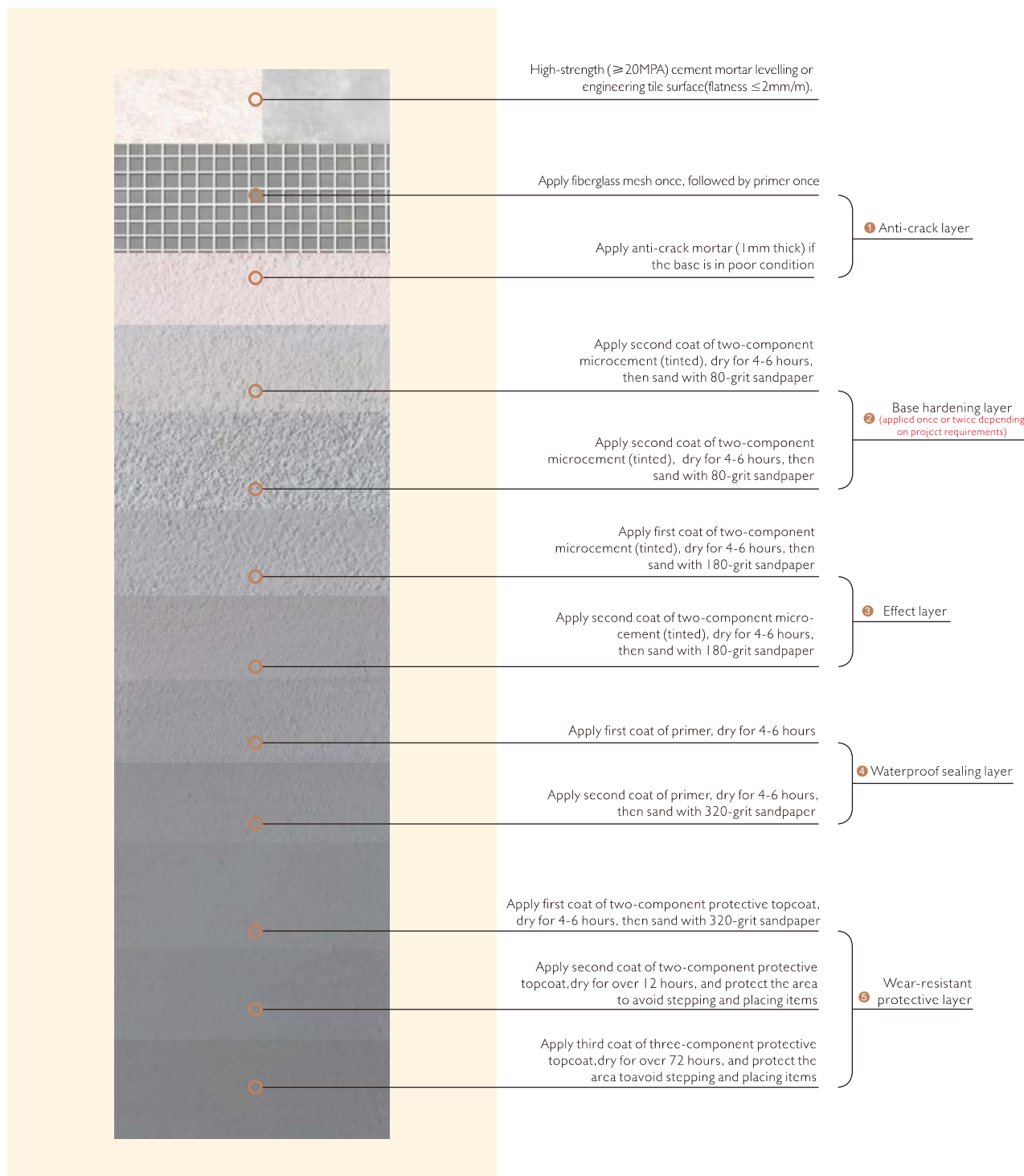
## Physical Properties

In terms of scratch, impact, and wear resistance, microcement far surpasses most natural wood materials.



# FLOOR

## LAYERING PROCESS



### Precautions

After completing the floor Microcement, keep it completely sealed for 72 hours to avoid touching or stepping.

After the 72-hour curing period, protect the site before use, avoiding heavy object pressure on the floor.

Microcement reaches optimal usage status 30 days post-application for normal use.

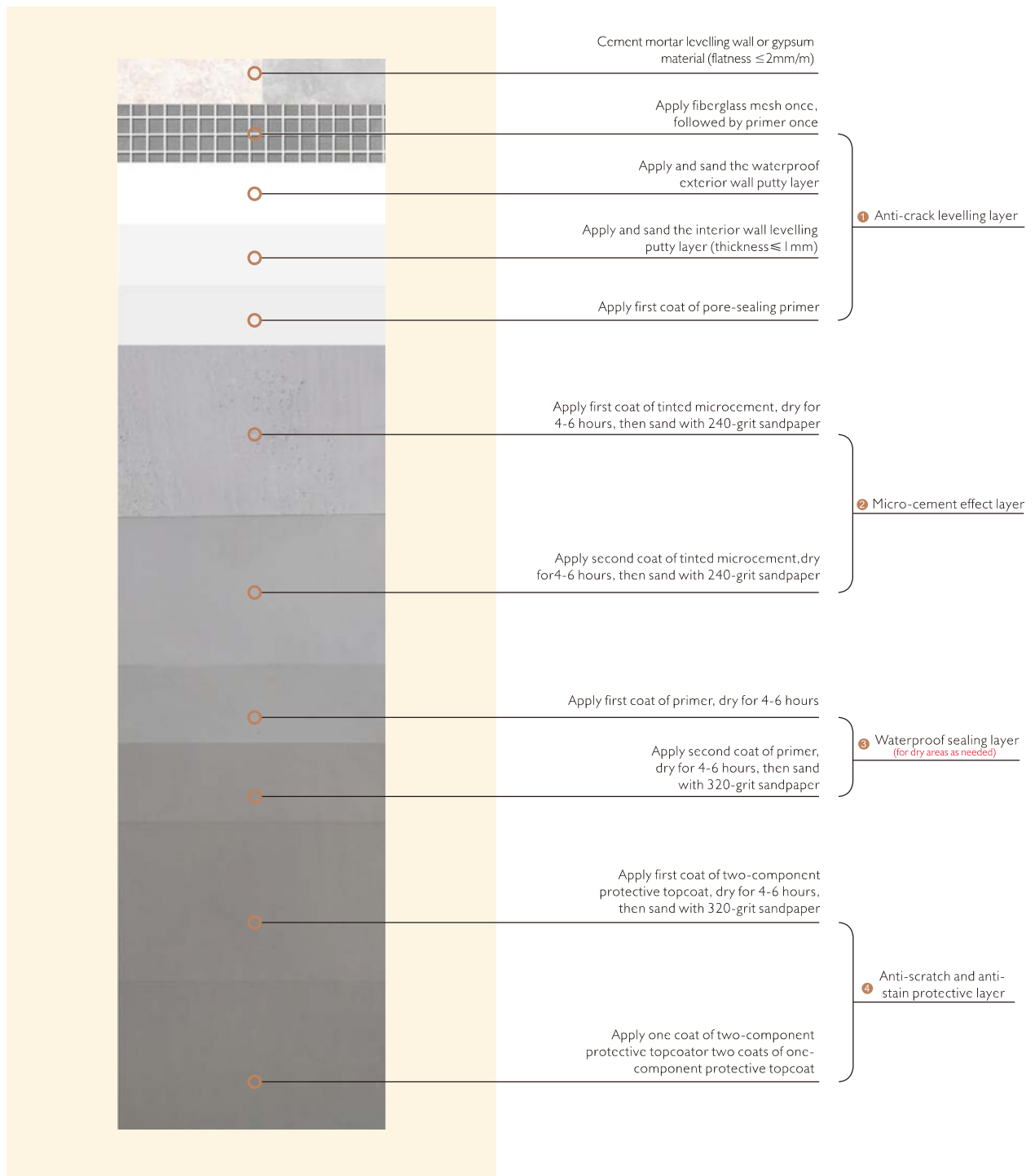
During use, maintain regular cleaning to avoid stains. Use recommended cleaning products.





# WALL

## LAYERING PROCESS



### Precautions

After completing the wall Microcement, keep it completely sealed for 24 hours to avoid touching or contamination.

After the 24-hour curing period, it can be used normally.

Microcement reaches optimal usage status 30 days post-application for normal use.

During use, maintain regular cleaning to avoid stains. Use recommended cleaning supplies.





---

# PRODUCT PACKAGING



Microcement Material



Base Microcement Material



Mixedresin



Primer



TOPCOAT-A



TOPCOAT-B



Micro Rock



Inorganic Stucco

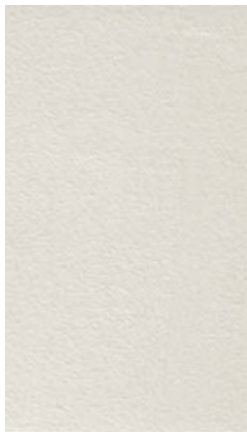


DIY DECORATE

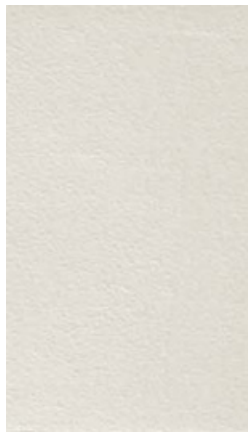


# COLOUR

## Palette.Sand brown



Sand brown **NF04-A**  
4g **F04**/10kg microcement



Sand brown **NF04-B**  
10g **F04**/10kg microcement



Sand brown **NF04-C**  
30g **F04**/10kg microcement



Sand brown **NF04-D**  
50g **F04**/10kg microcement

## Palette.Plaster brown



Plaster brown **NF01-A**  
4g **F01**/10kg microcement



Plaster brown **NF01-B**  
10g **F01**/10kg microcement

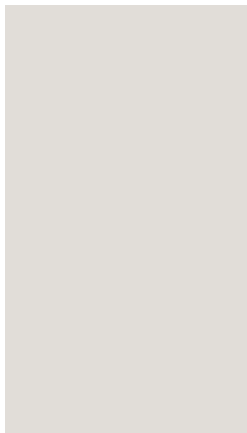


Plaster brown **NF01-C**  
30g **F01**/10kg microcement

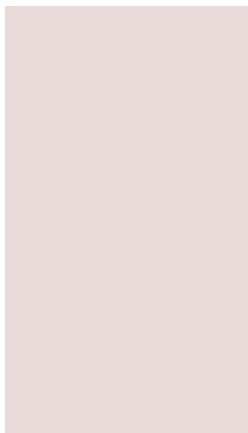


Plaster brown **NF01-D**  
50g **F01**/10kg microcement

## Palette.Noble brown



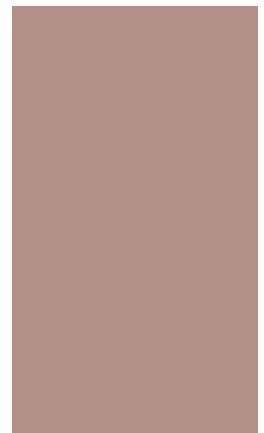
Noble brown **NF03-A**  
4g **F03**/10kg microcement



Noble brown **NF03-B**  
10g **F03**/10kg microcement



Noble brown **NF03-C**  
30g **F03**/10kg microcement



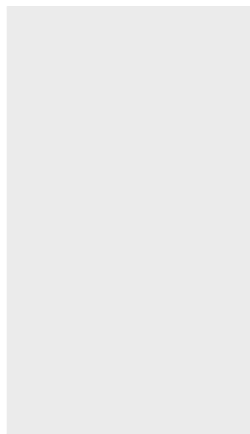
Noble brown **NF03-D**  
50g **F03**/10kg microcement



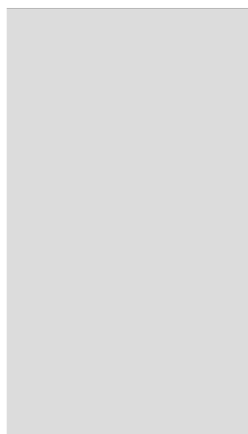


# COLOUR

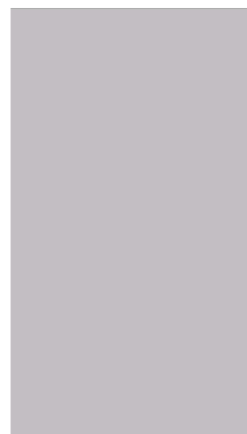
## Palette.Chestnut brown



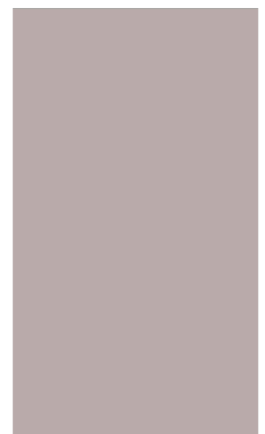
Chestnut brown **NF05-A**  
4g **F05**/10kg microcement



Chestnut brown **NF05-B**  
10g **F05**/10kg microcement

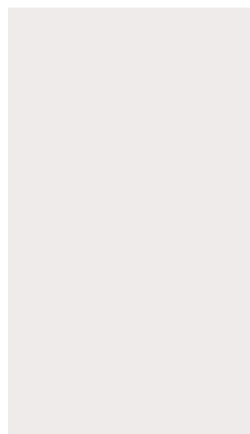


Chestnut brown **NF05-C**  
30g **F05**/10kg microcement

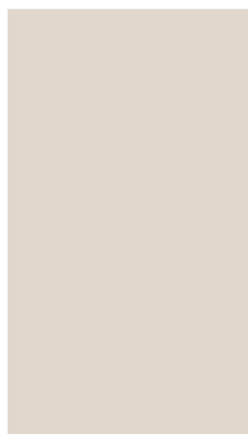


Chestnut brown **NF05-D**  
50g **F05**/10kg microcement

## Palette.Sunset yellow



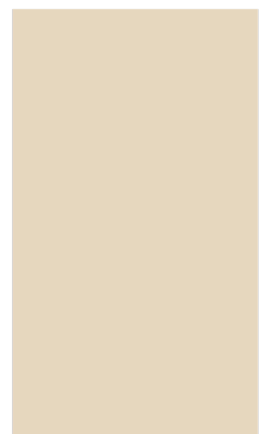
Sunset yellow **NF31-A**  
4g **F31**/10kg microcement



Sunset yellow **NF31-B**  
10g **F31**/10kg microcement

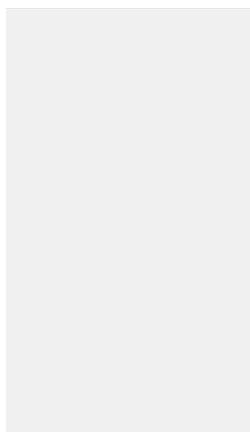


Sunset yellow **NF31-C**  
30g **F31**/10kg microcement

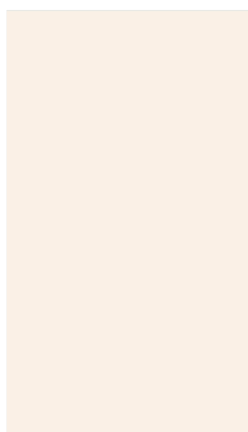


Sunset yellow **NF31-D**  
50g **F31**/10kg microcement

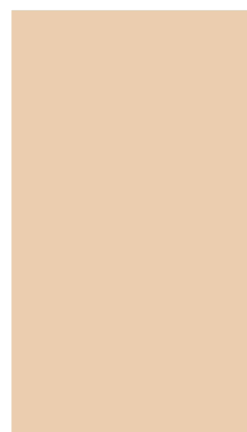
## Palette.Cheese yellow



Cheese yellow **NF23-A**  
4g **F23**/10kg microcement



Cheese yellow **NF23-B**  
10g **F23**/10kg microcement



Cheese yellow **NF23-C**  
30g **F23**/10kg microcement



Cheese yellow **NF23-D**  
50g **F23**/10kg microcement

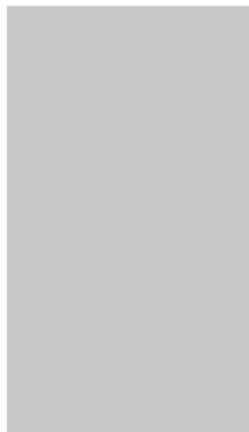






# COLOUR

## Palette.The elephant grey



The elephant grey **NF19-A**  
4g **F19**/10kg microcement



The elephant grey **Nf19 -B**  
10g **F19**/10kg microcement

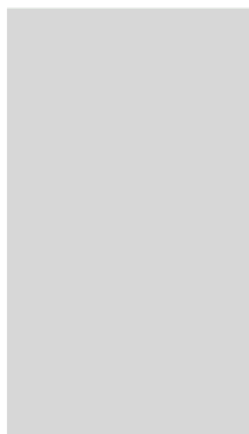


The elephant grey **NF19-C**  
30g **F19**/10kg microcement

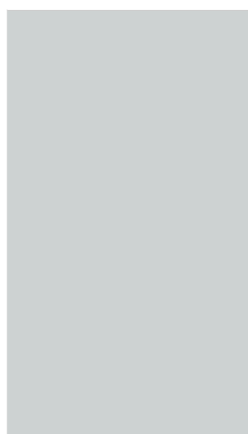


The elephant grey **NF19-D**  
50g **F19**/10kg microcement

## Palette.Yin hua ash



Yin hua ash **NF22-A**  
4g **F22**/10kg microcement



Yin hua ash **NF22-B**  
10g **F22**/10kg microcement

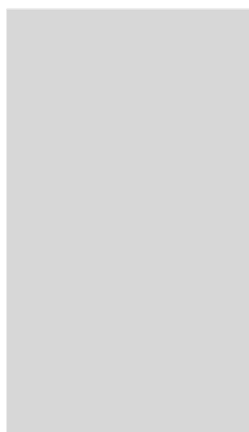


Yin hua ash **NF22-C**  
30g **F22**/10kg microcement

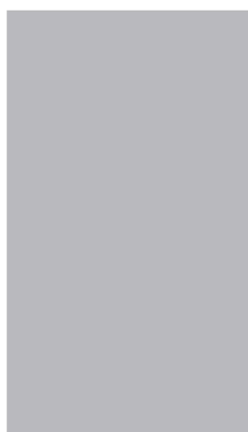


Yin hua ash **NF22-D**  
50g **F22**/10kg microcement

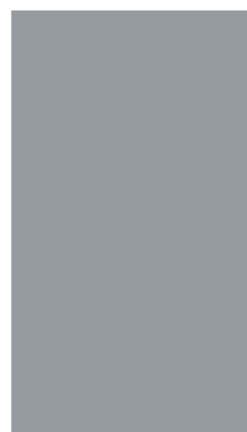
## Palette.The glacier grey



The glacier grey **NF21-A**  
4g **F21**/10kg microcement



The glacier grey **NF21-B**  
10g **F21**/10kg microcement



The glacier grey **NF21-C**  
30g **F21**/10kg microcement

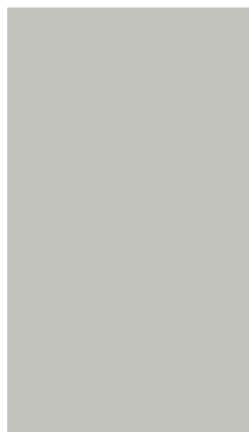


The glacier grey **NF21-D**  
50g **F21**/10kg microcement



# COLOUR

## Palette.Misty rain ash



Misty rain ash **NF18-A**  
4g **F18**/10kg microcement



Misty rain ash **NF18-B**  
10g **F18**/10kg microcement

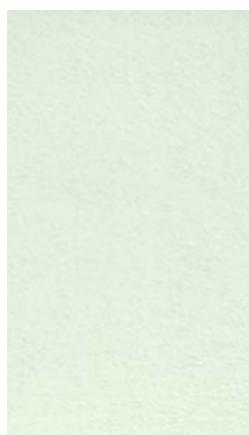


Misty rain ash **NF18-C**  
30g **F18**/10kg microcement

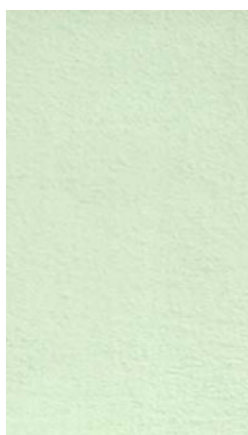


Misty rain ash **NF18-D**  
50g **F18**/10kg microcement

## Palette.Mint green



Mint green **NF30-A**  
4g **F30**/10kg microcement



Mint green **NF30-B**  
10g **F30**/10kg microcement



Mint green **NF30-C**  
30g **F30**/10kg microcement



Mint green **NF30-D**  
50g **F30**/10kg microcement

## Palette.Modern blue



Modern blue **NF07-A**  
4g **F07**/10kg microcement



Modern blue **NF07-B**  
10g **F07**/10kg microcement



Modern blue **NF07-C**  
30g **F07**/10kg microcement



Modern blue **NF07-D**  
50g **F07**/10kg microcement





# COLOUR

## Palette.Shark ash



Shark ash **NF10-A**  
4g **F10**/10kg microcement



Shark ash **NF10-B**  
10g **F10**/10kg microcement



Shark ash **NF10-C**  
30g **F10**/10kg microcement



Shark ash **NF10-D**  
50g **F10**/10kg microcement

## Palette.Warm grey



Warm grey **NT11-A**  
4g **T11**/10kg microcement



Warm grey **NT11-B**  
10g **T11**/10kg microcement

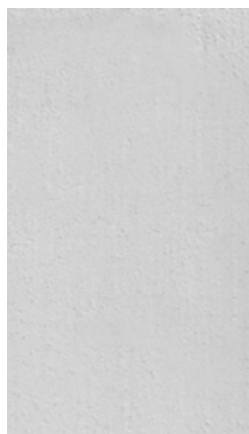


Warm grey **NT11-C**  
30g **T11**/10kg microcement



Warm grey **NT11-D**  
50g **T11**/10kg microcement

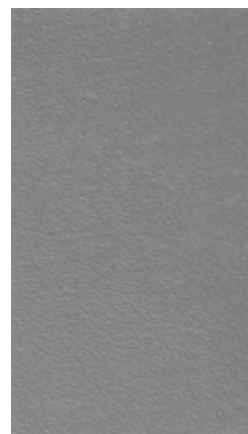
## Palette.Cold gray/black



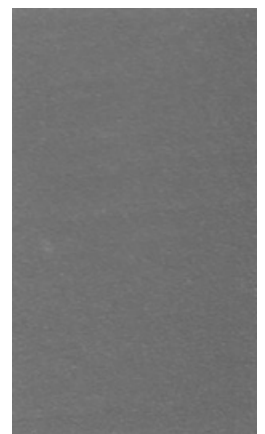
Cold gray/black **NT71-A**  
4g **T71**/10kg microcement



Cold gray/black **NT71-B**  
10g **T71**/10kg microcement



Cold gray/black **NT71-C**  
30g **T71**/10kg microcement



Cold gray/black **NT71-D**  
50g **T71**/10kg microcement

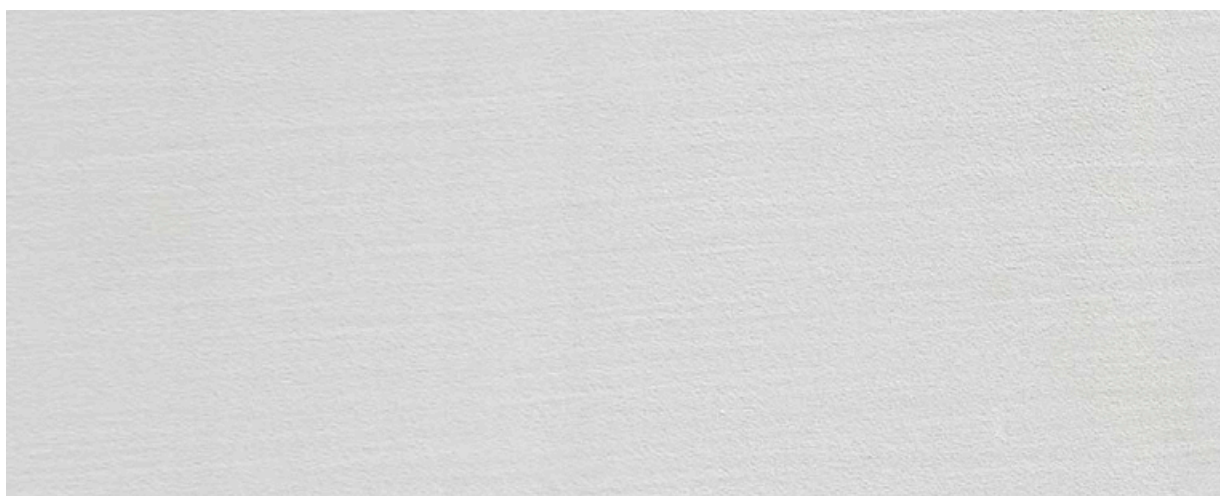






Fine Microcement

---



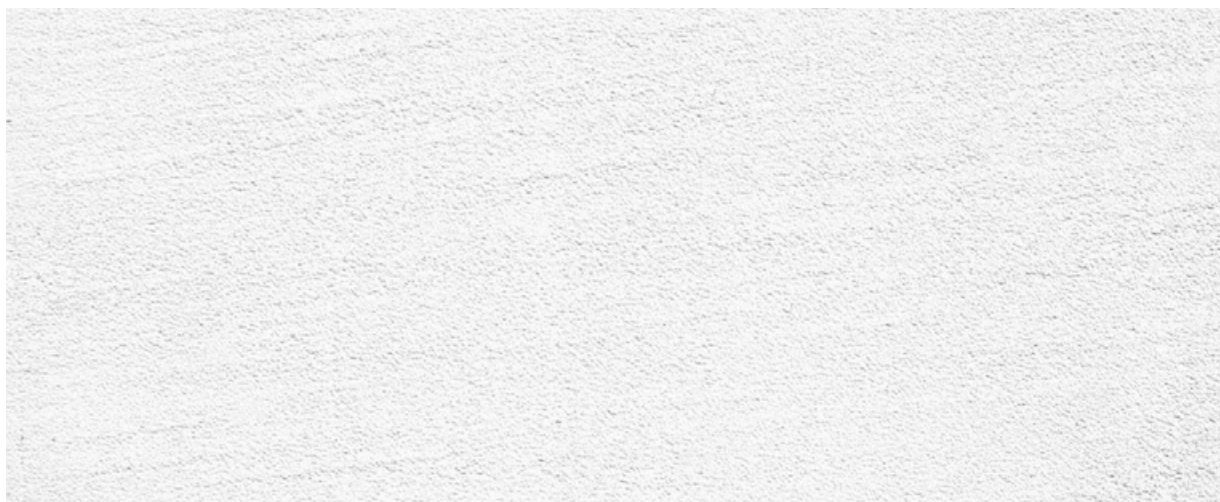
Medium Microcement

---



Coarse Microcement

---







Skin Texture Microcement

---



Mottled Microcement

---



Cave Stone Microcement

---







Ceramic Microcement

---



Metallic Microcement

---



Micro Terrazzo

---









Pure Matt

---



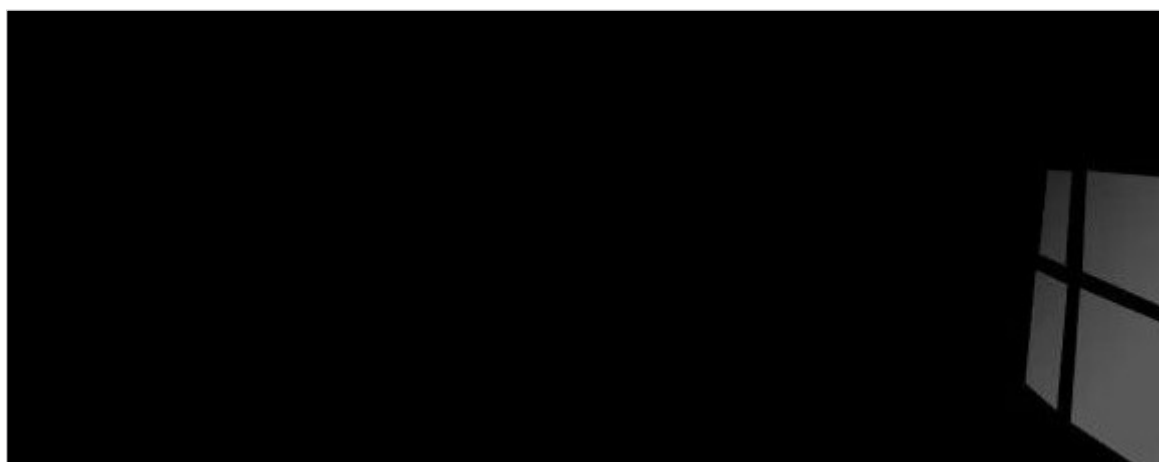
Half Matte

---

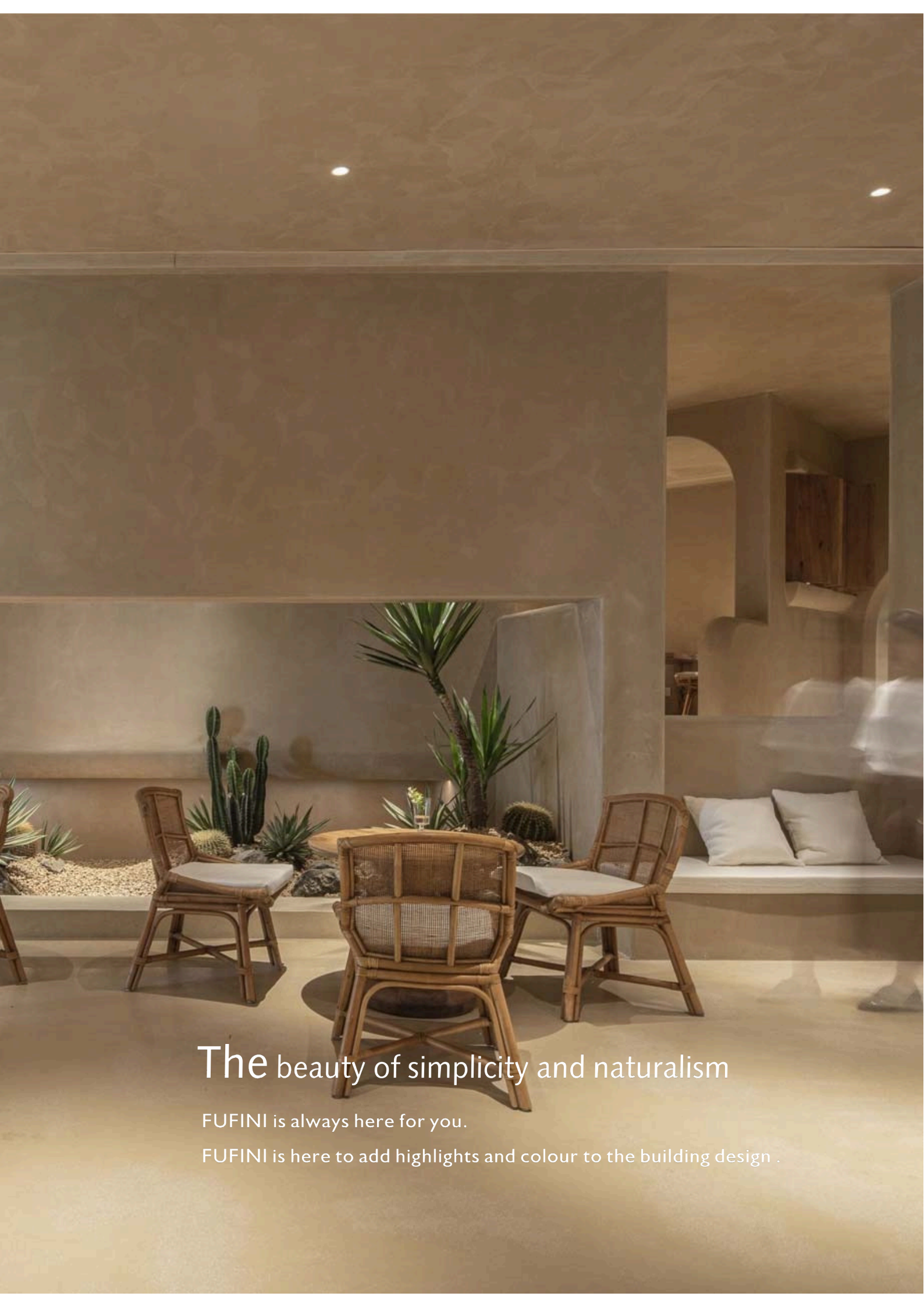


Half Gloss

---







# The beauty of simplicity and naturalism

FUFINI is always here for you.

FUFINI is here to add highlights and colour to the building design .



Contact Us:

Fufini Indonesia, Pakualam, Kec. Serpong Utara, Kota Tangerang Selatan, Banten 15320.

Website: [www.fufini.id](http://www.fufini.id)

Instagram : [@fufini.id](https://www.instagram.com/fufini.id)

WhatsApp : +62 812 - 9999 - 4969